

TRANSFORMING TRANSIT IN YOUR AREA

Oriole GO Station- Pedestrian Walkway Temporary Closure



New Track

150 kilometres of new dedicated GO track will allow for more uninterrupted service.



New Trains

New electric trains will travel faster for longer and reduce travel times.



New Bridges and Tunnels

Bridges and tunnels that eliminate intersections with rail and road traffic will provide more reliable GO train service.



New Renovations

New and improved stations will make your journey more comfortable, from start to finish.

THE LOCAL PROJECT

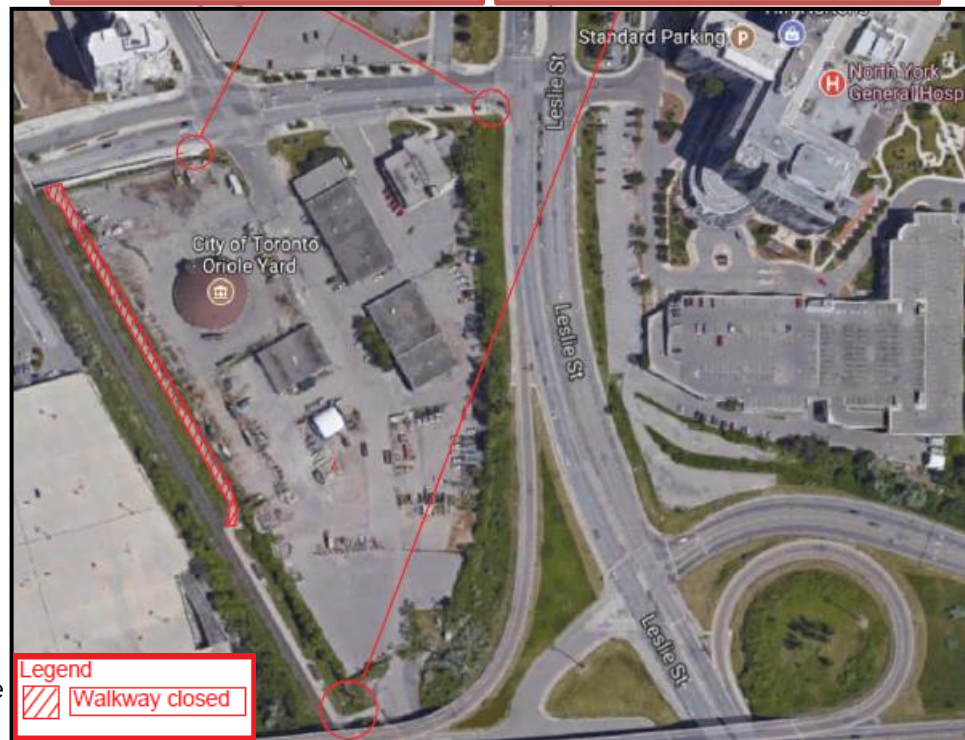
The Ministry of Transportation is currently completing construction, as part of a series of contracts to reconstruct and reconfigure the Highway 401 and Leslie Street interchange. As part of this construction, and to ensure the safety of pedestrians, the pedestrian pathway adjacent to Oriole GO Station platform will be closed beginning mid-October, from 8:45 a.m. - 3:15 p.m. Monday to Friday, until January 2018.

WHAT DOES THIS MEAN FOR YOU

During this closure, pedestrians are encouraged to use Leslie Street as an alternate route, which is located one street east of the pathway. We appreciate your patience and understanding as we work to complete this project.

Walkway to Oriole GO Station closed Monday - Friday, 8:45 a.m. - 3:15 p.m. Use Leslie Street access. →

Walkway to Esther Shiner Blvd. closed Monday - Friday, 8:45 a.m. - 3:15 p.m. Use Leslie Street access. →



For more information, feel free to contact us at the number or email address below.

Jennifer Capan, Community Relations & Issues Specialist, Richmond Hill Corridor

Tel: 416-202-4732/Email: Jennifer.capan@metrolinx.com

We encourage you to sign up to our email distribution list to receive updates by contacting Jennifer.capan@metrolinx.com, call 416-202-4732, or visit us at metrolinx.com.

METROLINX