



TRANSFORMING TRANSIT IN YOUR AREA

Upcoming Overnight work near Mount Joy Station on November 12th to 30th

Metrolinx, an agency of the Province of Ontario, is working to transform the way the region moves by building a seamless, convenient and integrated transit network across the Greater Toronto and Hamilton Area (GTHA). Over the next ten years, Metrolinx is transforming the existing GO rail system to deliver a whole new rapid transit experience to your community. With more frequent train service you'll have more options to get you where you need to go.

THE LOCAL PROJECT

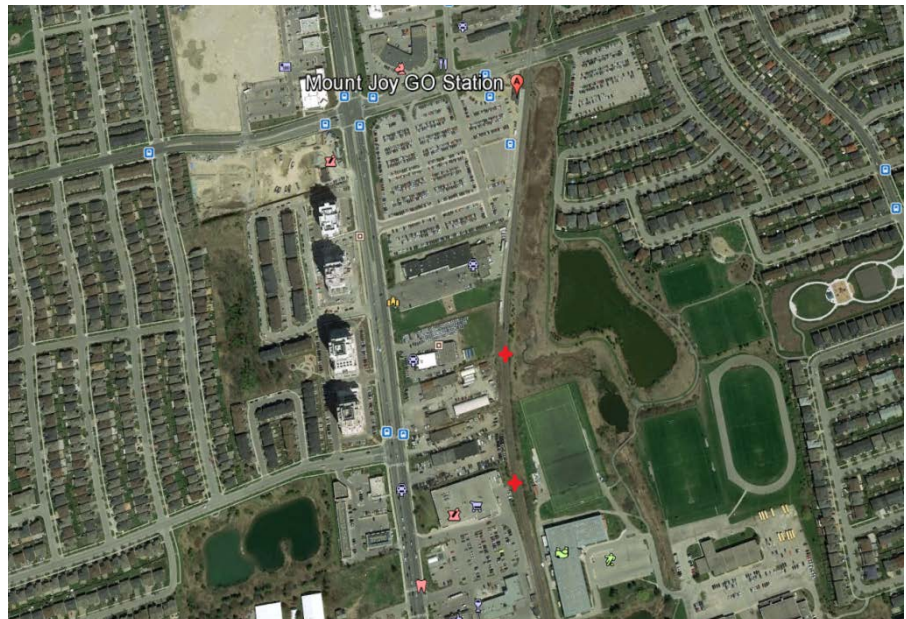
A multi-year construction program to expand and improve a 17-kilometre segment of GO Transit's Stouffville line in Scarborough and Markham is well underway. Expanding GO service in both directions means upgrading the existing rail corridor by: electrifying the corridor, and making track improvements for regular maintenance and to handle more trains. From November 12th to 30th, crews will be installing insulated joints on track, which will include overnight work.

WHAT TO EXPECT

In order to safely complete this work, Metrolinx will be doing this work between November 12 and November 30 between the hours of 11:00PM to 5:00AM each night including weekends.

Work will occur just to the south of Mount Joy GO Station, where the red stars are located on the map image here →.

There will be moderate noise produced by this work.



For further questions or concerns, please contact Azim Ahmed

Tel: 416-202-5837/ E-mail: azim.ahmed@metrolinx.com