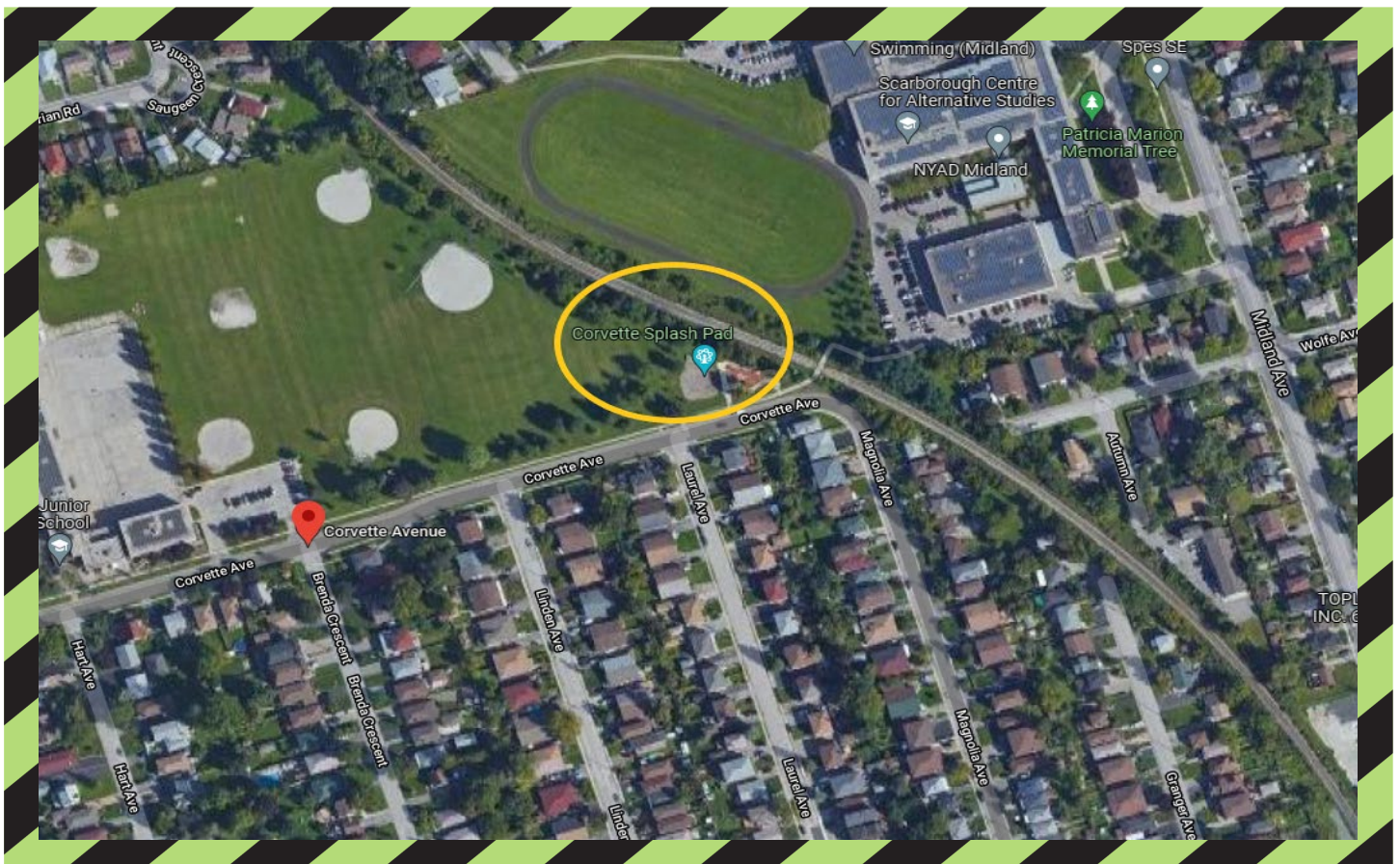


Corvette Splash Pad Material Survey

November 2021



What is Happening?

As part of the preparation and investigation for a future GO Expansion project, material sampling will be underway in the Corvette Park splash pad area.

Updates will be provided in the Toronto East e-newsletter. To subscribe, go to metrolinx.com/subscribe.

What to Expect?

GO Expansion continues to improve, update, and modernize our infrastructure. Enhancements to tracks, bridges, and stations are necessary to prepare our current service to meet tomorrow's needs.

- 1-2 field staff will be collecting bulk samples of materials and photographing the materials
- Staff will access the area by foot and be collecting the materials using hand tools (e.g. hammer, chisels and utility knives)
- Samples will be placed directly into sample bags and sealed
- All sample areas will be patched

HOURS OF WORK

- The work is planned to be completed on Monday, November 29 and will take approximately 4 hours
- Work may be rescheduled due to unforeseen circumstances
- Updates to be provided in the Toronto East e-newsletter

TRAFFIC & PEDESTRIAN DETAILS

- No traffic impacts are anticipated at this time.
- As always, please take care when travelling near work sites.

TRANSIT INFORMATION

- No impacts to TTC, or other public transit modes are anticipated during this work.

OTHER INFORMATION

- For the latest information on what's happening in your area, please subscribe to our weekly e-newsletter by going to metrolinx.com/subscribe.

Thank you for your patience as we work to transform the rail corridor in your area.

Contact Us:

Email: TorontoEast@metrolinx.com
Telephone: 416-202-3900
Find us on Twitter @GOExpansion
Visit the website: www.metrolinx.com
Disponible en français