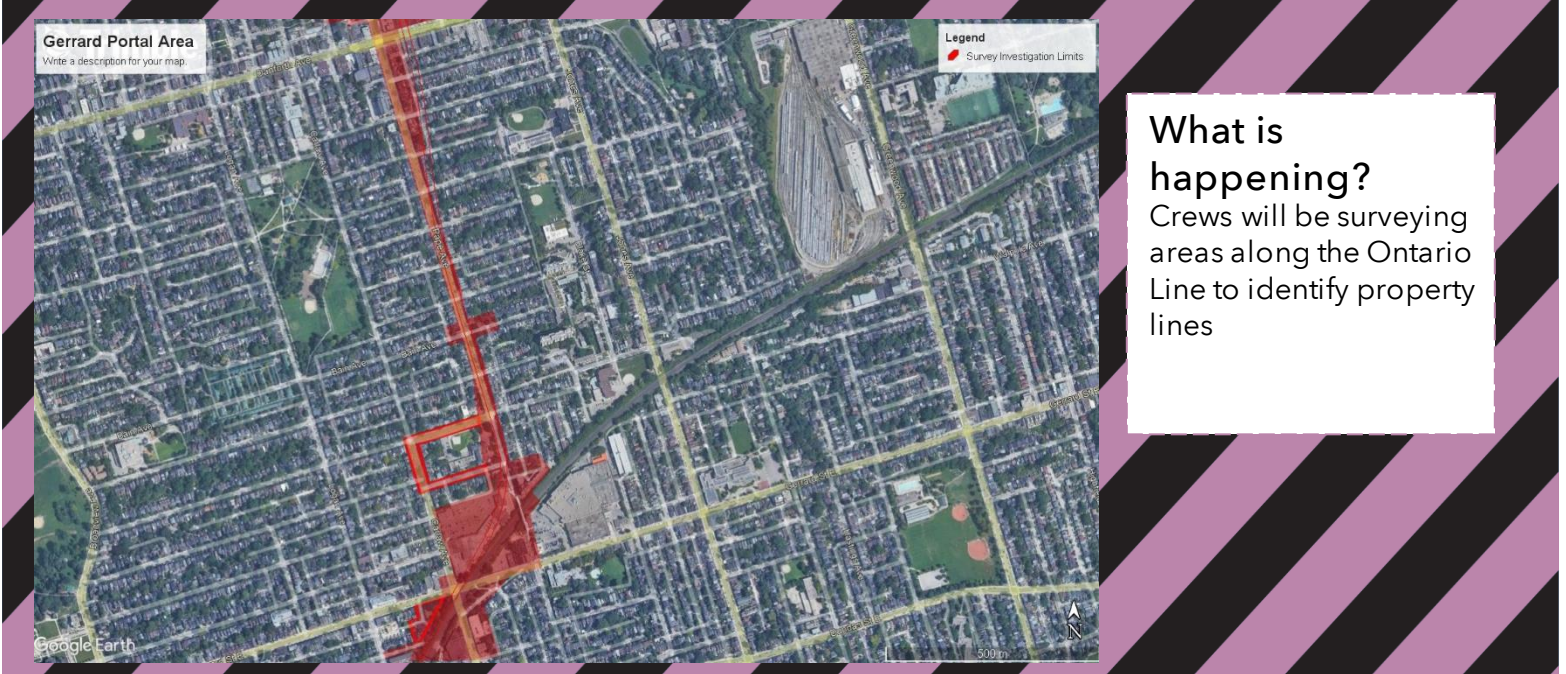


Surveying in Gerrard Portal area for the Ontario Line

Starting early May 2022



Timing

- **Scheduled start:**
Starting early May 2022
- **Duration:**
Two (2) Months
- **Days:**
Monday to Friday
- **Hours:**
8am-5pm



What to expect

- Crew will be using tripods, standard survey equipment, paint, and shovels to conduct survey work and identify property.
- At times, utility location markings will be visible on sidewalks, driveways, and front lawns. **This may include uncovering and unearthing property markers that define lot boundaries**
- All property corners can be accessed from City roads or trails, but private properties and front yards may need to be accessed, and lot bars dug up or uncovered.
- Any missing legal monuments will be installed. Crews will hand dig at locations prior to installing bars or use plastic bars as a safety measure to avoid damaging any underground infrastructure or utilities.
- **Paint markings may be used to mark locations of found or set property markers.**
- **Adjacent properties may need to be accessed and legal monuments dug up and uncovered to confirm and establish property boundaries.**
- GPS or total station surveys will be performed on these monuments to tie them into the network.
- Access to properties will be maintained at all times through at least one driveway.
- Every effort will be made to minimize disruptions and expedite work.
- Please take care when walking near construction areas. Watch for additional signs directing pedestrians, as detours may be required.
- Work may be delayed or reschedule due to inclement weather or unforeseen circumstances.

The Ontario Line



15.6 kilometres of transit service



Making it faster and easier for hundreds of thousands of people to get where they need to be



Over 40 new connections to GO train lines and existing subway, streetcar, and bus lines.



To stay updated, sign up for our e-newsletter at [Metrolinx.com/OntarioLine](https://www.metrolinx.com/OntarioLine)

Write to us at: OntarioLine@Metrolinx.com
Call us at: 416-202-5100

Visit the website: [Metrolinx.com/OntarioLine](https://www.metrolinx.com/OntarioLine)

Information as of: May 5, 2022



Disponible en français sur demande. Si vous êtes intéressé, veuillez envoyer un courriel à OntarioLine@Metrolinx.com.