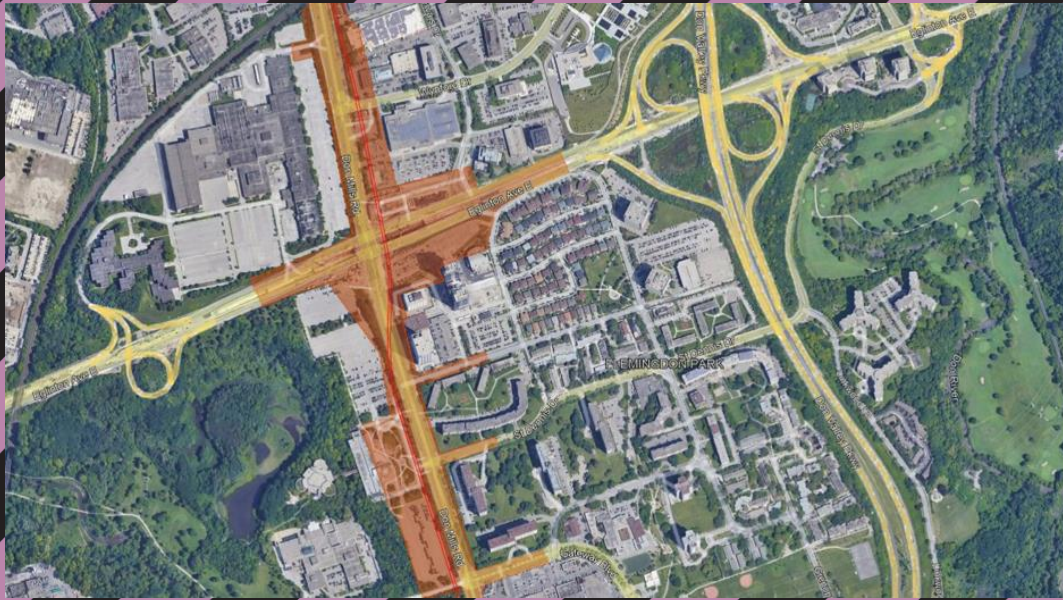


Surveying near Eglinton and Don Mills

Starting as early as February 10, 2022



What is happening?

Crews will be surveying areas along the Ontario Line to identify utility locations, take measurements, identify property lines and evaluate underground conditions.

Timing


- **Scheduled start:**
February 10th, 2022
- **Duration:**
Two (2) Weeks
- **Days:**
Monday-Friday
- **Hours:**
7am-5pm

What to expect

- Crews will use standard survey equipment including, tripod, static scanners, total station, and hand-held equipment to locate and document property lines and utilities in the vicinity of Eglinton and Don Mills.
- Paint Markings and stakes will be used to mark the location of underground utilities.
- Utilities are located within the public right of way.
- Please note that the crew will be on the sidewalks and will not be on the road surface.
- The crew may need to access the side streets of Rochefort, St Dennis, and Gateway Blvd during non-peak times to collect topographic information.
- Work may be delayed or rescheduled due to inclement weather or unforeseen circumstances.

The Ontario Line

 15.6 kilometres of transit service

 Making it faster and easier for hundreds of thousands of people to get where they need to be



Over 40 new connections to GO train lines and existing subway, streetcar, and bus lines.



To stay updated, sign up for our e-newsletter at [Metrolinx.com/OntarioLine](https://www.metrolinx.com/OntarioLine)

Write to us at: OntarioLine@Metrolinx.com
 Call us at: 416-202-5100
 Visit the website: [Metrolinx.com/OntarioLine](https://www.metrolinx.com/OntarioLine)
Information as of: February 8, 2022



Disponible en français sur demande. Si vous êtes intéressé, veuillez envoyer un courriel à OntarioLine@Metrolinx.com.