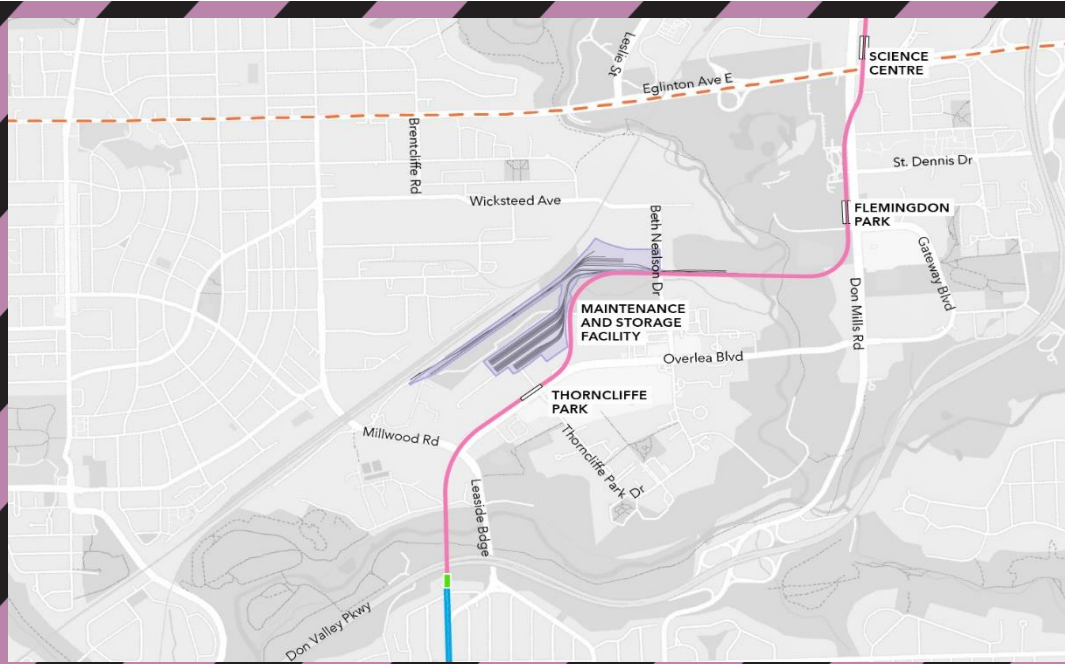


Surveying in the North Segment of the Ontario Line

Starting as early as April 25, 2022



What is happening?
 Crews will be surveying areas along the Ontario Line to identify utility locations, take measurements and evaluate underground conditions.



Timing

- **Scheduled start:**
April 25th, 2022
- **Duration:**
Two (2) Days
- **Days:**
Monday-Tuesday
- **Hours:**
8am-4pm



What to expect

- Crews will use handheld equipment to locate and document utilities in the following areas:
 - Gateway Blvd and Don Mills Rd.
 - Hydro corridor (along Pat Moore Dr. near Millwood Rd.)
 - Don Valley Parkway near 44 Beechwood Dr.
 - 40 Beth Neilson Dr.
- Paint Markings and flagging will be used to mark the locates.
- Utilities are located within the public right of way.
- Please note that the sidewalk will remain open during this work.
- Work may be delayed or rescheduled due to inclement weather or unforeseen circumstances.

The Ontario Line



15.6 kilometres of transit service



Making it faster and easier for hundreds of thousands of people to get where they need to be



Over 40 new connections to GO train lines and existing subway, streetcar, and bus lines.



To stay updated, sign up for our e-newsletter at [Metrolinx.com/OntarioLine](https://www.toronto.ca/metro/ontario-line/)

Write to us at: OntarioLine@Metrolinx.com
 Call us at: 416-202-5100
 Visit the website: [Metrolinx.com/OntarioLine](https://www.toronto.ca/metro/ontario-line/)
Information as of: April 24, 2022



Disponible en français sur demande. Si vous êtes intéressé, veuillez envoyer un courriel à OntarioLine@Metrolinx.com.