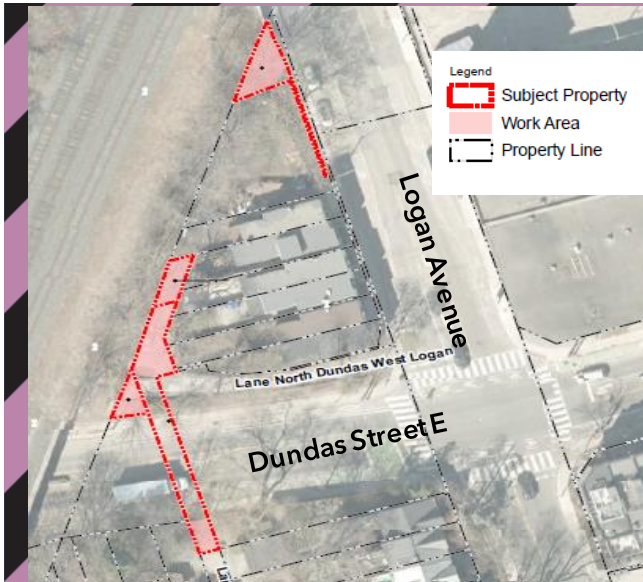


Archaeological Investigations in the Logan Avenue Area

Starting as early as July 13, 2022



What is happening?

A Stage 2 Archaeological Assessment will be completed by hand dug test pits along Logan Avenue laneway and adjacent properties.



Timing

- **Start Date:**
July 13, 2022
- **Duration:**
Two days
- **Days:**
July 13 and 15, 2022
- **Hours:**
Approximately 8 a.m. to 6 p.m.



What to expect

- A three-person crew will be using hand-held tools to conduct a Stage 2 Archaeological Assessment
- Stage 2 Archaeological Assessment will include creation of small (approximately 30-centimeter diameter) shallow test pits at regular intervals and examination of content for archaeological artifacts. In the laneway west of homes, one-meter square openings will be cut approximately every 5 meters followed by hand digging with shovels of 30-centimeter diameter test pits.
- Areas subject to test pits creation will be restored after the work has been completed.
- Indigenous Monitors may be on site to monitor the archaeological work being undertaken.
- Minimum impact on pedestrians, traffic or road access is expected.
- Work may be delayed or rescheduled due to weather conditions or unforeseen circumstances.

The Ontario Line



15.6 kilometres of transit service



Making it faster and easier for hundreds of thousands of people to get where they need to be



Over 40 new connections to GO train lines and existing subway, streetcar, and bus lines.



To stay updated, sign up for our e-newsletter at [Metrolinx.com/OntarioLine](https://www.metrolinx.com/OntarioLine)

Write to us at: OntarioLine@Metrolinx.com

Call us at: 416-202-5100

Visit the website: [Metrolinx.com/OntarioLine](https://www.metrolinx.com/OntarioLine)

Information as of: June 24, 2022



Disponible en français sur demande. Si vous êtes intéressé, veuillez envoyer un courriel à OntarioLine@Metrolinx.com.