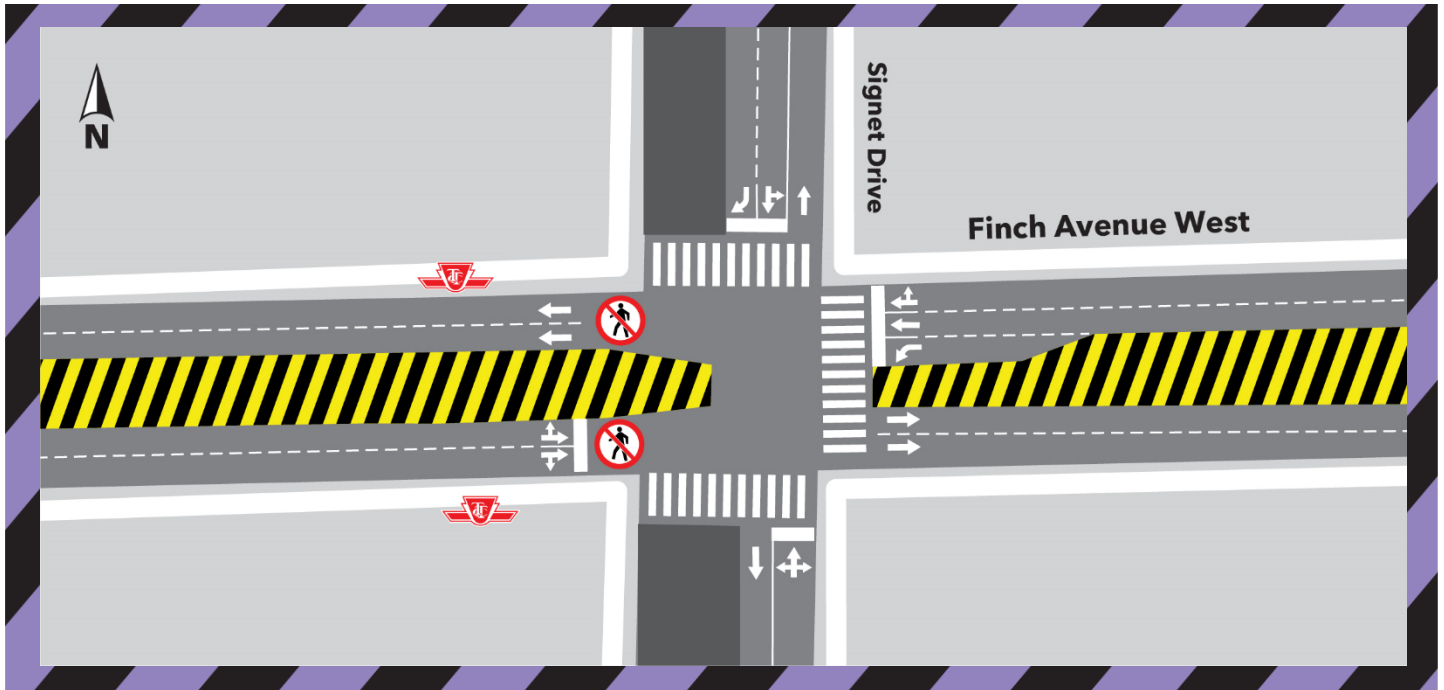


Guideway installation on Finch Avenue West and Signet Drive

July - September 2022



LOCATION

- Finch Avenue West and Signet Drive

IMPACT

- Rolling temporary lane closures
- East crosswalk is closed.
- Periodic sidewalk and crosswalk closures.
- Temporary relocation of TTC bus stops, if needed
- Minor field modifications may occur when needed to complete work safely and minimize impact on the public.

TIMING

- July - September 2022
- Work hours from 7:00 a.m. to 5:00 p.m.
- There may be overnight and/or weekend work, if needed.
-

WORK DESCRIPTION

- Guideway Installation
- Installation of permanent traffic signals and at grade stops

DETAILED DESCRIPTION:

As part of the Finch West Light Rail Transit (LRT) Project, crews will be working on the guideway Installation at the Intersection of Finch Avenue West and Signet Drive. The work also includes installation of permanent traffic signals and at grade stops. It is scheduled to start in July 2022, and will last for two (2) months, approximately.

Sidewalks and crosswalks may be closed periodically. Minor field modifications will occur when needed to complete work safely and minimize impact on the public.

There will be a Paid Duty Officer, flaggers, and detour signs to direct traffic, as needed.

We will continue monitoring noise and vibration levels to make sure they are always within permitted ranges.



WORK HOURS:

- Work will primarily occur Monday to Friday from 7 am to 5 pm. There may be overnight and/or weekend work, if needed.
- Signs are installed to keep local residents informed about the closure.
- Dates are tentative and may change. Please visit us at www.metrolinx.com/finchwestlrt for up-to-date information.
- Inclement weather or unforeseen circumstances may delay work activities.

WHAT TO EXPECT:

- Heavy trucks and equipment in the area.
- Due to the nature of the work, at times there will be dust, noise and vibration associated with this work.
- Nearby businesses and residents can expect noise from excavators, bobcats, vacuum trucks and other construction equipment caused by road work activities.
- Expect delays near work zones.

PEDESTRIAN, TRAFFIC AND TRANSIT DETAILS:

- Road and sidewalk restrictions are in place within the construction area to protect workers and the public.
- Pedestrians will be re-routed around the construction area when possible. For safety reasons, pedestrians may be diverted to the sidewalk on the opposite side.
- In the event of any parking restrictions, advanced notice will be provided.
- A minimum of one lane of traffic in each direction along Finch Ave. W. will be maintained at all times.

Virtual Hours of Operation:
Monday- Friday, 9:00 a.m. to 5:00 p.m.
In person- by appointment.
Tel: 416-202-6500

Cet avis de travaux de construction est disponible en français sur demande. Si vous êtes intéressé, veuillez envoyer un courriel à TorontoWest@metrolinx.com

Contact Us:

Write to us at: TorontoWest@metrolinx.com
Find us on Twitter @FinchWestLRT
Visit the website: www.metrolinx.com/finchwestlrt