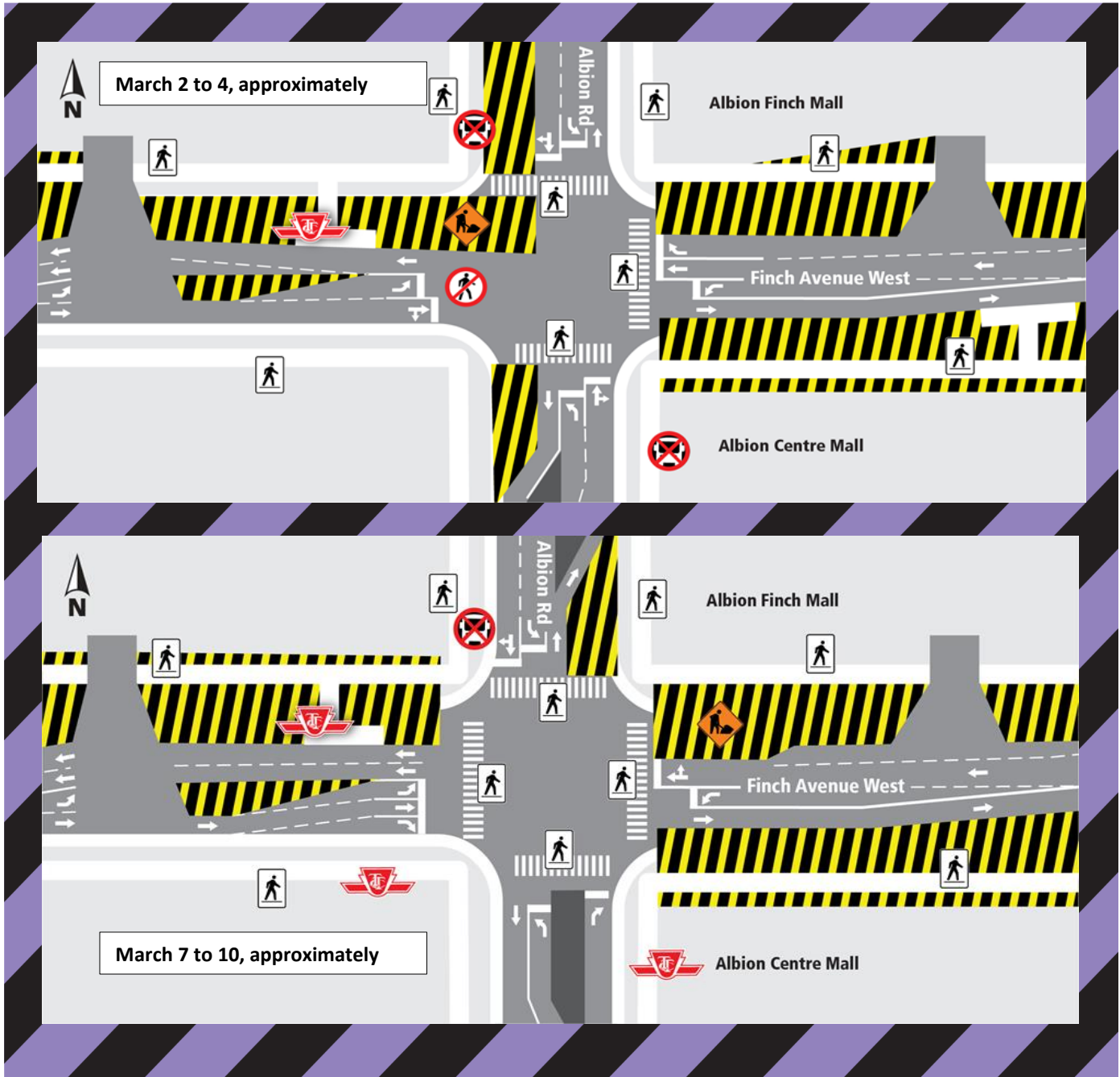


Partial Road Closure for Utilities Installation on Finch Avenue West and Albion Road

March 2 - 4 and March 7 - 10, 2022



What?

As part of the preparatory works for the Finch West Light Rail Transit (LRT) line, crews have been relocating utilities in the vicinity of Finch Avenue West and Albion Road.

Crews will install a storm sewer at Finch Avenue West and Albion Road. The work will be done in two stages:

- Stage 1 - Northeast quadrant: March 2 - 4, 2022
- Stage 2 - Northwest quadrant: March 7 - 10, 2022

To safely perform the work, the Finch Avenue West and Albion Road intersection will be partially closed as shown above. Northeast quadrant will close first and when it re-opens, northwest quadrant will close at Finch Avenue West. The closures will not occur at the same time.

Sidewalks and crosswalks may be closed periodically. Minor field modifications will occur when needed to complete work safely and minimize impact on the public.

There will be a Paid Duty Office, flaggers and detour signs to direct traffic, as needed.

WORK HOURS:

- Work will primarily occur Monday to Friday from 7:00 am to 5:00 pm. There may be overnight and/or weekend work, if needed.
- Signs are installed to keep local residents informed about the closure.
- Dates are tentative and may change. Please visit us at www.metrolinx.com/finchwestlrt for up-to-date information.
- Inclement weather or unforeseen circumstances may delay work activities.

WHAT TO EXPECT

- Heavy trucks and equipment will be working in the area.
- Due to the nature of the work, at times there will be dust, noise and vibration associated with this work.
- Nearby businesses and residents can expect noise from excavators, bobcats, vacuum trucks

and other construction equipment caused by road work activities.

- Expect delays near work zones.

PEDESTRIAN, TRAFFIC AND TRANSIT DETAILS:

- Road and sidewalk restrictions are in place within the construction area to protect workers and the public.
- Pedestrians will be re-routed around the construction area when possible. For safety reasons, pedestrians may be diverted to the sidewalk on the opposite side.
- In the event of any parking restrictions, advanced notice will be provided.
- A minimum of one lane of traffic in each direction along Finch Ave. W. will be maintained at all times.
- Expect short-term lane closures of the curb lanes in the area.

Virtual Hours of Operation:
Monday- Friday, 9:00 a.m. to 5:00 p.m.
In person- by appointment.
Tel: 416-202-6500

Cet avis de travaux de construction est disponible en français sur demande. Si vous êtes intéressé, veuillez envoyer un courriel à TorontoWest@metrolinx.com

Contact Us:

Write to us at: TorontoWest@metrolinx.com
Find us on Twitter @FinchWestLRT
Visit the website: www.metrolinx.com/finchwestlrt