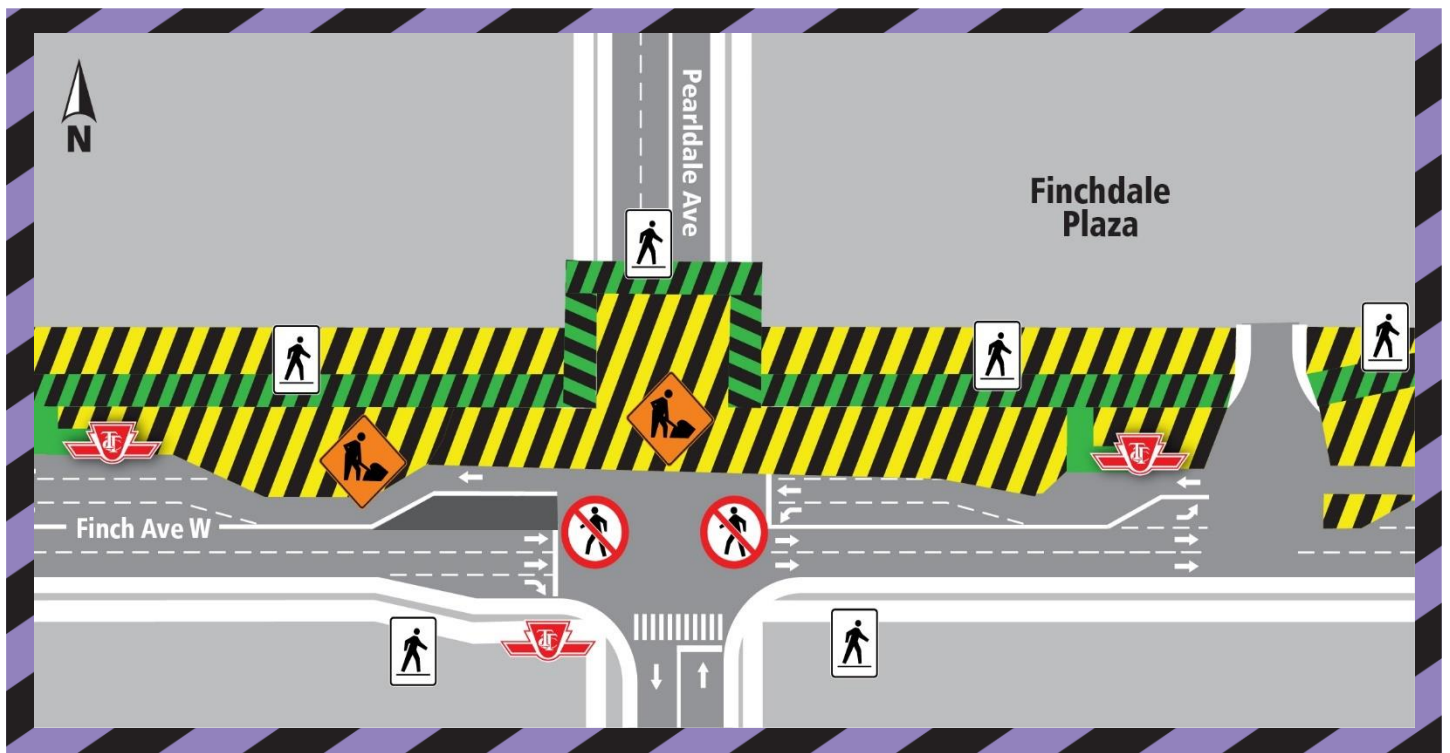


Full Intersection Closure at Pearldale Avenue and Finch Ave West

September 25, 2021



What?

As part of the Finch West Light Rail Transit (LRT) Project, crews will be working on utilities installation at the intersection of Finch Avenue West and Pearl Dale Avenue. To safely perform the work across the intersection, it will be fully closed from 7:00 a.m. till 7:00 p.m. on Saturday, September 25, 2021. To minimize traffic disruptions, a Paid Duty Officer will be managing traffic at Finch Avenue W. and Pearl Dale Avenue, as needed.

Signs will be posted to keep residents and businesses informed in advanced.


WORK HOURS:

- Closure at Pearldale Avenue and Finch Ave. W. on Saturday September 25, 2021, from 7:00 a.m. till 7:00 p.m., approximately.
- This work may be delayed or rescheduled due to inclement weather or unforeseen circumstances.

WHAT TO EXPECT:

- Heavy trucks and equipment in the area.
- Due to the nature of the work, at times there will be dust, noise and vibration associated with this work. Noise and vibration monitors will be installed in the area, if needed.
- Expect delays near work zones.

PEDESTRIAN AND TRAFFIC DETAILS:

- A Paid Duty Officer will control the intersection at Finch Ave. W. and Pearldale Avenue, if needed
- Please be careful when navigating near construction zones.
- Thank you for your patience and we apologize for any inconvenience.

Virtual Hours of Operation:
Monday- Friday, 9:00 a.m. to 5:00 p.m.
In person- by appointment.
Tel: 416-202-6500

Cet avis de travaux de construction est disponible en français sur demande. Si vous êtes intéressé, veuillez envoyer un courriel à TorontoWest@metrolinx.com

Contact Us:

Write to us at: TorontoWest@metrolinx.com
Find us on Twitter [@FinchWestLRT](https://twitter.com/FinchWestLRT)
Visit the website: www.metrolinx.com/finchwestlrt