



The Big Move
Baseline Monitoring Report
Metrolinx Board – September 10, 2013

Leslie Woo
Vice President, Policy, Planning & Innovation



What is the Baseline Monitoring Report?

A technical supporting document that:

- Reviews status of the 92 Priority Actions and Supporting Policies of *The Big Move* being implemented by Metrolinx and other partners and stakeholders.
- Establishes a 2008 baseline of Key Performance Indicators (KPIs) for monitoring the goals of The Big Move
- Highlights progress in expanding the regional rapid transit network
- Demonstrates the principle of transparency and public accountability as set out in the Investment Strategy

How will it be Used?

- This document will be used by Metrolinx, municipalities, other local transit operators, and other stakeholders:
 - to inform regular public progress reporting
 - to monitor ongoing alignment of policy and project delivery with The Big Move goals
 - to inform public decision-making
- Metrolinx will also use this document as a benchmark for the legislated review of the Regional Transportation Plan, to be completed by 2016.
- Private sector enterprises, professionals and the general public will have access to this document on-line

Engagement Process

- This Baseline Monitoring Report was established over a 2.5 year period with the input and advice of a numerous groups including:
 - An external multi-stakeholder, multi-disciplinary Project Committee comprised of some former members of the RTP Advisory Committee and also included representatives from academia, civil society, development industry, environmental NGOs, students and professionals
 - A municipal working group comprised of representatives from GTHA municipal planning and transportation officials
 - A transit agency working group comprised of representatives from GTHA local transit operators
 - A Provincial inter-Ministry stakeholder group
 - A third party Peer Review Panel that included Michael Roschlau (CUTA), Pierre Fillion (UWaterloo), and Eric Miller (UToronto)

What does the Baseline measure?

Key Performance Indicators	
How are we moving around the GTHA?	<ul style="list-style-type: none"> • mode of transportation • transit ridership
Is there more choice in how we travel?	<ul style="list-style-type: none"> • transit service per capita • length of regional rapid transit
Do more people live and work close to fast and reliable transit?	<ul style="list-style-type: none"> • living close to rapid transit • working close to rapid transit
Are we providing transportation alternatives for those who need them the most?	<ul style="list-style-type: none"> • transportation choice for low-income households • accessibility of transit • transportation choice for children • transportation choice for seniors
Are we safer as we travel?	<ul style="list-style-type: none"> • road safety
Are we reducing the impact of transportation on the environment?	<ul style="list-style-type: none"> • air quality • emissions
Are we better connected across the GTHA?	<ul style="list-style-type: none"> • transit between urban centres • highway travel speeds • Pearson Airport access
Is transit provision in the GTHA becoming more fiscally sustainable?	<ul style="list-style-type: none"> • transit efficiency

What the Baseline Monitoring Report tells us?

Policy and project work has advanced including:

- Over \$16 billion committed to First Wave regional rapid transit projects
- Integration of GO and local transit fare payment with PRESTO
- Better integration of transportation and land use planning – Mobility Hub Guidelines, GO Transit Rail Parking and Station Access Plan, Transit-Supportive Land Use Guidelines
- Establishment of the Investment Strategy recommending how to pay for The Big Move,
- Tripling the number of large employers in the GTHA participating in the Smart Commute program
- Transit Procurement Initiative has grown over four times to 23 participating Ontario municipalities

Even more is under development including:

- GTHA Service and fare integration analysis has been initiated
- Common reporting and customer service standards under development
- Continued work on planning for Next Wave regional rapid transit projects
- Investment Strategy program for allocation of 25% of recommended revenues under development



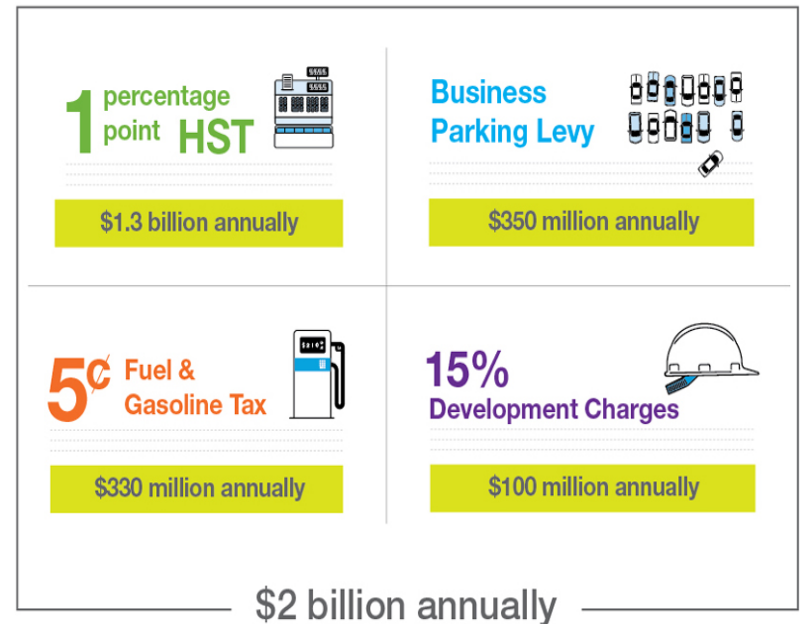
Highlights

- Expansion of the regional rapid transit network:
 - ✓ Over \$16 billion invested in major infrastructure projects
 - ✓ Work is continuing on planning and design of the Next Wave projects
 - ✓ UP Express on target for 2015 opening
 - ✓ Major restoration work underway at Union Station



Highlights

- An Investment Strategy to provide immediate, stable and predictable funding has been set out
- Municipal progress in advancing active transportation
- PRESTO has expanded across the whole GTHA
- GTHA Urban Freight industry roundtable has been established



Next Steps

From the **External Multi-disciplinary Project Committee**:

- Make regular progress reporting on the regional transportation plan a priority, continuing to build accountability and public confidence in Metrolinx and its partners
- Build on this Baseline Monitoring Report to ensure that the best available data and indicators. To ensure a high quality in tracking performance and facilitating informed decision-making
- Be creative – convey data in a clear, accessible

and

- Post the The Big Move Baseline Monitoring Report on the Metrolinx website for public information and share with key stakeholders;

Recommendations

RESOLVED

- THAT the Board of Directors receive The Big Move Baseline Monitoring Report for information;
- AND THAT on behalf of the Board, the Metrolinx President & CEO formally thank the members of the Project Committee and other working groups for their contributions.

Thank you
Merci