

# TRANSFORMING TRANSIT IN YOUR AREA

## FINCH WEST LIGHT RAIL TRANSIT (LRT)

Information as of May 2018

### Natural Gas Line Relocation for the Finch West Light Rail Transit (LRT) Finch Ave and Rumike Rd Construction

Metrolinx is currently working on the construction of the Finch West Light Rail Transit (LRT) - an 11km LRT running along Finch Ave. West between Keele St. and Humber College. Enbridge Gas Distribution must move the natural gas pipelines along the Finch West LRT route from the centre of the road to the south side of Finch Ave. West.

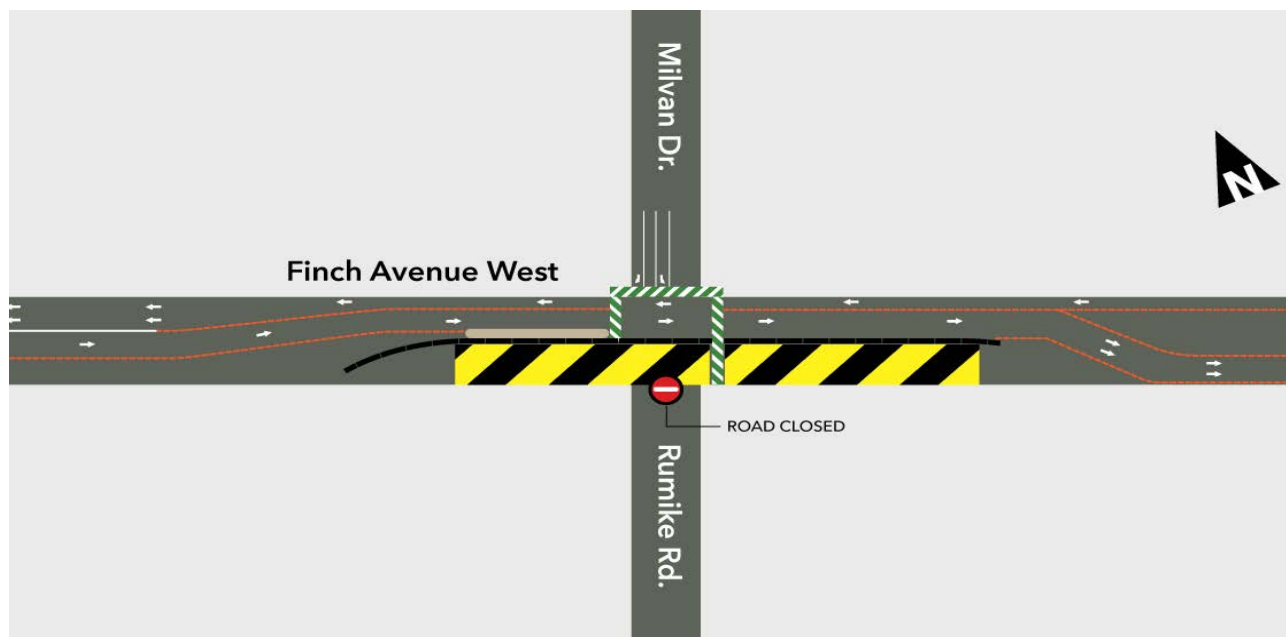
**What:** As part of the project, Enbridge will be moving natural gas pipelines on Finch Ave. West between Rumike Rd. and Jayzel Dr. Entrance to Rumike Rd. from Finch Ave. W. will be closed for two weeks to three weeks). During this time, access will be available via Jayzel Dr.

**When:** Starting May 25<sup>th</sup> 2018 to mid-June

**Why:** As part of the construction of the new Finch West LRT, Enbridge must move natural gas pipelines from the centre of the roadway to the south side of Finch Ave. West.

**Where:** The work will take place on the south side of Finch Ave. West.

For the up to date details follow us on Twitter @FinchWestLRT , Instagram @ finchwestlrt or visit us at [metrolinx.com/finchwest](http://metrolinx.com/finchwest).



**To keep residents safe and to better manage traffic during construction:**

- During construction, crews will use a section of the parking lot, located on the east side of the Benville Court apartment complex.
- During construction crews will remove four (4) parking spaces at the north end of the parking lot to allow access to each driveway entrance from both sides of the parking lot. Residents whose parking spots are affected have been notified by building management, and alternate arrangements have been made.
- Closing of the building's driveways will switch, starting with the west entrance.
- One entrance will always be open to enter and exit the parking lot.

**Work Hours**

Most of the work takes place between 7:00 a.m. and 7:00 p.m., Monday to Friday, but some late night and/or early morning work may be required.

**Contact**

For more information about this gas line relocation work, please contact Enbridge at 416-495-4809 or [enbridgegasmedia@enbridge.com](mailto:enbridgegasmedia@enbridge.com).

For information regarding the Finch West LRT project and its construction, please contact Metrolinx at 416- 202-6500 or [finchwest@metrolinx.com](mailto:finchwest@metrolinx.com).

Stay up to date by contacting us at [finchwest@metrolinx.com](mailto:finchwest@metrolinx.com), follow us on Twitter @FinchWestLRT or visit us at [metrolinx.com/finchwest](http://metrolinx.com/finchwest).

Cet avis de travaux de construction est disponible en français sur demande. Si vous êtes intéressé, veuillez envoyer un courriel à [finchwest@metrolinx.com](mailto:finchwest@metrolinx.com).