



TRANSFORMING TRANSIT IN YOUR AREA

Geotechnical Overnight Work Until October 19th at Proposed Lawrence-Kennedy Station

Metrolinx, an agency of the Province of Ontario, is working to transform the way the region moves by building a seamless, convenient and integrated transit network across the Greater Toronto and Hamilton Area (GTHA). Over the next ten years, Metrolinx is transforming the existing GO rail system to deliver a whole new rapid transit experience to your community. With more frequent train service you'll have more options to get you where you need to go.

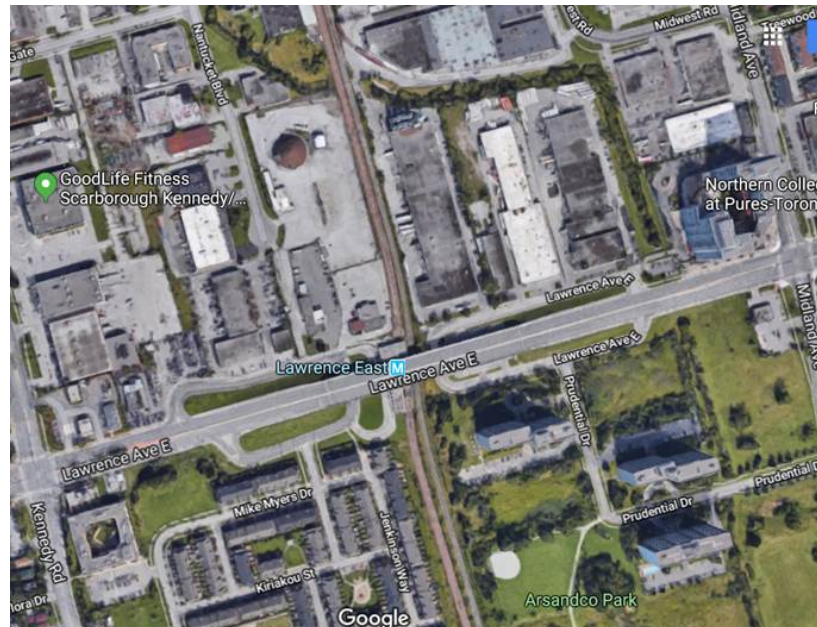
THE LOCAL PROJECT

A multi-year construction program to expand and improve a 17-kilometre segment of GO Transit's Stouffville line in Scarborough and Markham is well underway. Expanding GO service in both directions means upgrading the existing rail corridor by: electrifying the corridor, adding a second track and related signals, and making improvements to stations and railway crossings. Also included is a proposed SmartTrack station at Lawrence and Kennedy. Next week, overnight geotechnical work will continue at this proposed site and have an expected completion date of Friday October 19th.

WHAT TO EXPECT

In order to safely complete this work, Metrolinx will be doing this work during the week, include overnight hours between 10:00PM and 5:00Am.

Work will involve moderate noise levels that includes drill rigs working concurrently to drill boreholes as deep as 40mm into the ground.



For further questions or concerns, please contact Azim Ahmed Tel: 416-202-5837/ E-mail:

azim.ahmed@metrolinx.com

We encourage you to sign up to our email distribution list to receive updates, or follow us on Twitter @metrolinx, or visit us at metrolinx.com/RER